

UBIFLUX F300

Heat recovery unit (ceiling unit)

The Ubiflux F300 unit for ceiling (or wall) mounting is flat, quiet and requires minimal installation height. For additional connection options, the unit is also available in a Plus version.

Features and benefits

- Constant flow control
- Automatic bypass as standard (100% summer bypass)
- Filter indication (on clock control)
- Intelligent energy-efficient frost control Meets EN308 standard - www.epbd.be



Technical specifications

F300	
Ventilation capacity at 150Pa [m³/h]	50-300
Thermal efficiency	89% => 55m³/h 83% => 178m³/h 80% => 234m³/h 78% => 300m³/h
Channel connection	4x ø150/ø160
Electric consumption/fan [W]	85
Dimensions [mm]	1185x644x310
Filter class	G4 ISO Coarse 60%
Constant-flow	Yes
Condensate drain [mm]	Ø32
SFP*	0,24 Wh/m³/h
Weight [kg]	37
Frost protection	Intelligent frost control with pre-heater
Pre-heater	Stepless 0-375 W
Supply voltage [V/Hz]	230/50
Siphon	Option
Clock control	Option

* 70% max en 50 Pa



UBIFLUX F300

Heat recovery unit (ceiling unit)



ubbink

Build smart.

Connection options		
	Standaard	Plus
E-bus communication	x	x
4-position switch	x	x
Wireless remote control	x	x
Service connector	x	x
Pre-heater (max. 1000W - external connection) RH sensor (humidity sensor)	x	x
Additional pre-heater		x
Additional reheater		x
Ground heat exchanger (EWT)		x
24 V power supply 4,5VA		x
0-10V output for valve control EWT		x
1 programmable external make or break contact		x
1 programmable 0-10V input for CO ₂ and/or RH sensor (programmable to additional make or break contact or additional 0-10V input)		x

Reduction factor

In the calculation of the E-level, heat losses due to ventilation are corrected by a reduction factor. To reduce ventilation losses, a demand-controlled ventilation system can be used. Such a system controls the flow rates according to the need for ventilation. Control is e.g. by detecting the presence of people, humidity or CO₂.

Reduction factor			
Type of detection in dry room	Type of dry room supply control	Reductiefactor	Ubbink system
CO ₂ room: one or more sensors in each dry room	2 (day/night) or more zones	0.49	Kit 0121178
CO ₂ semi-local: one or more sensors in the main living spaces and in the main bedroom	2 (day/night) or more zones	0.53	Kit 0888342
CO ₂ room: one or more sensors in each dry room	Central	0.61	Kit 0121179
CO ₂ semi-local: one or more sensors in the main living space and the main bedroom	Central	0.87	Kit 0121180



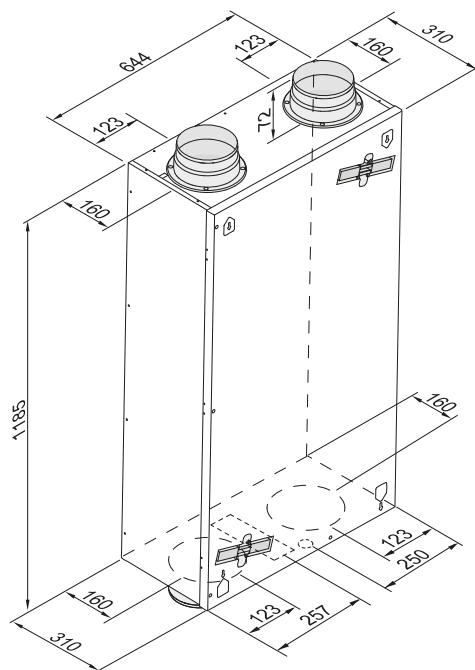
UBIFLUX F300

Heat recovery unit (ceiling unit)



Connections

1		To residence
2		Outside
3		From home
4		From outside
5		Electrical connection
6		Condensate drain



All sizes in millimetres. Diameter all drill rings 125mm.

Sound power level F300										
Ventilation capacity [m³/h]		100		200		225		300		
Sound power level Lw (A)	Static pressure [Pa]	17	40	38	80	84	100	160	150	178
	Cabinet radiation [dB(A)]	29	30	37	40	46	46	47	53	53
	Channel 'from dwelling' [dB(A)]	32	32	41	43	49	49	50	55	55
	Channel 'to dwelling' [dB(A)]	43	44	51	53	60	61	62	69	68

In practice, measurement tolerances may cause the value to deviate by 1dB(A).

Position

F300					Maximum
Capacity [m3/h]	50	100	150	225	300
Acceptable air resistance [Pa]	3-6	11-26	25-58	56-129	100-230
Power consumption (excl. preheater) [W].	8,7-9,1	14,9-16,3	25,7-31,7	57,8-77,8	116,1-162,9
Power consumption (excl. preheater) [A].	0,10	0,15-0,17	0,25-0,29	0,50-0,66	0,95-1,34
Power consumption (incl. preheater) [A].	6				
Waterproof level	IP30				



UBIFLUX F300

Heat recovery unit (ceiling unit)

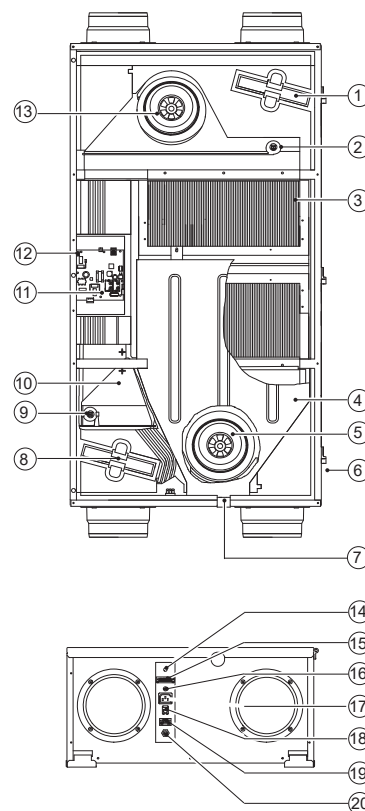


ubblink

Build smart.

Onderdelen

1	Exhaust air filter
2	Indoor temperature sensor
3	Heat exchanger
4	Condensate tray
5	Extractor fan
6	Front panel locking screw (mounted in front panel)
7	Condensate drain
8	Supply air filter
9	Outdoor temperature sensor
10	Bypass
11	Control PCB
12	Connector X14
13	Outdoor temperature sensor
14	Lead-through cable 230 V reheater or additional preheater
15	9-pole connector (only for plus version)
16	Service connection
17	Connection 230V preheater
18	Modular connector for standard switch
19	Connector eBus
20	Mains cable 230 V



Ecodesign

Average climate zone

Manual	A
Clock control	A
1 sensor	A
2 or more sensors	A+



UBIFLUX F300

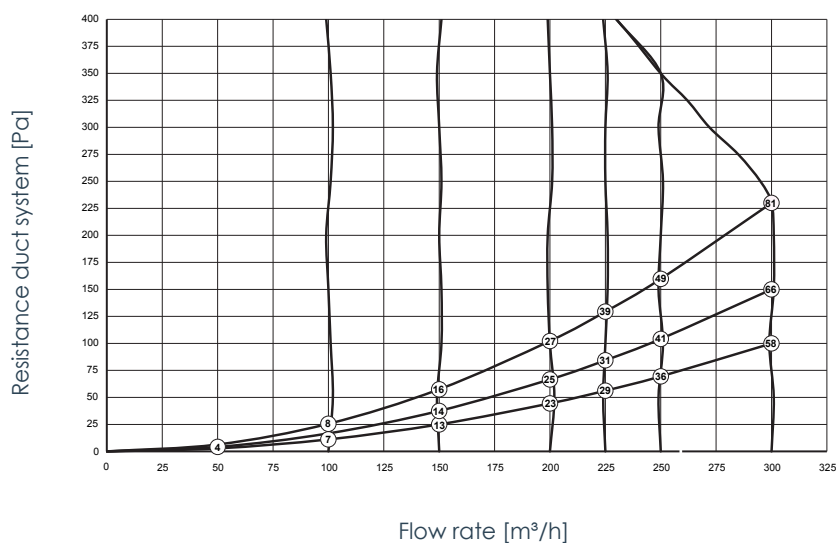
Heat recovery unit (ceiling unit)



Build smart.

Ventilator chart

F300



Note: the values circled in the graph are the power used (Watts per fan)

