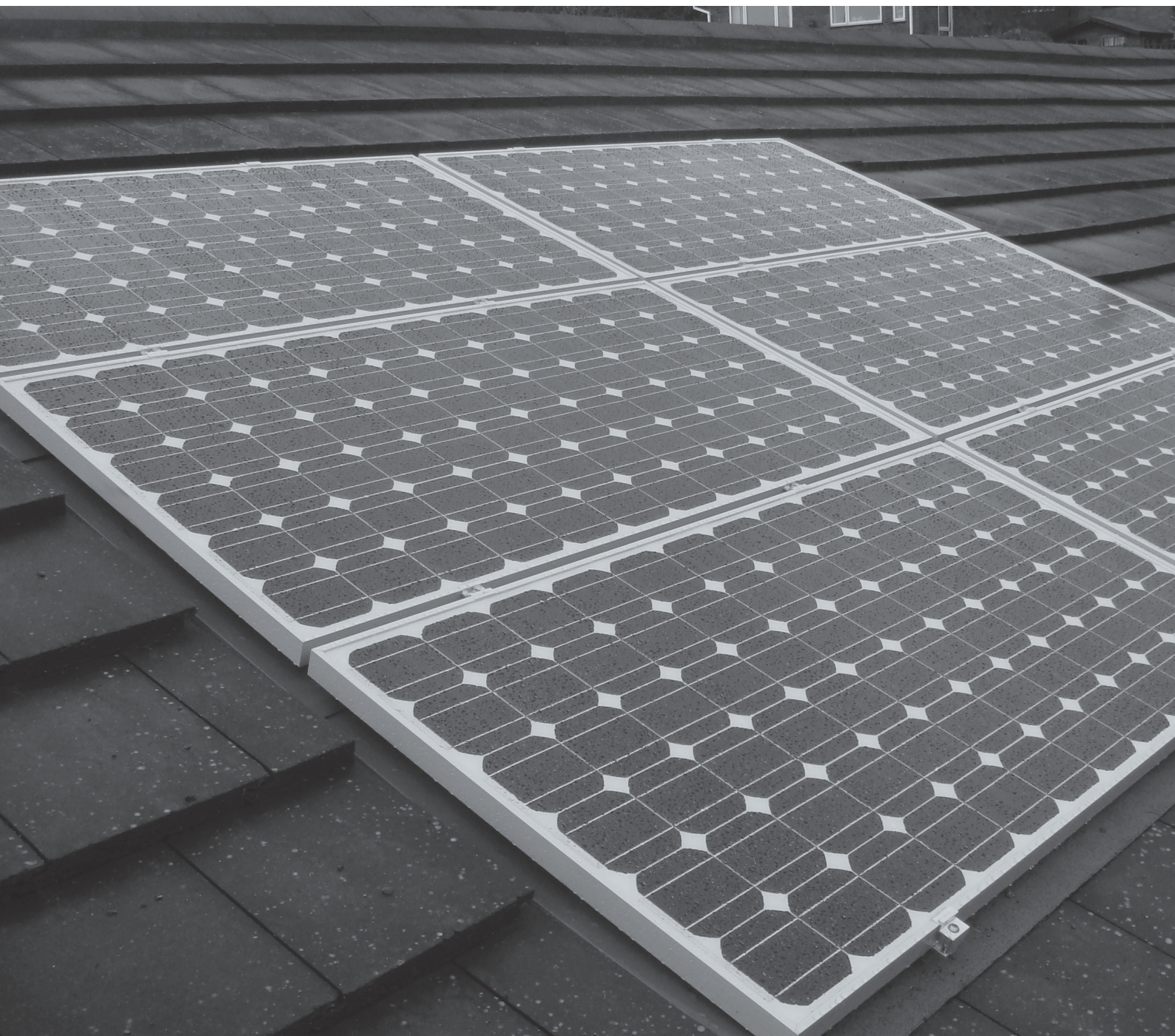


UBIFLEX - FOR SOLAR IN-ROOF INSTALLATIONS

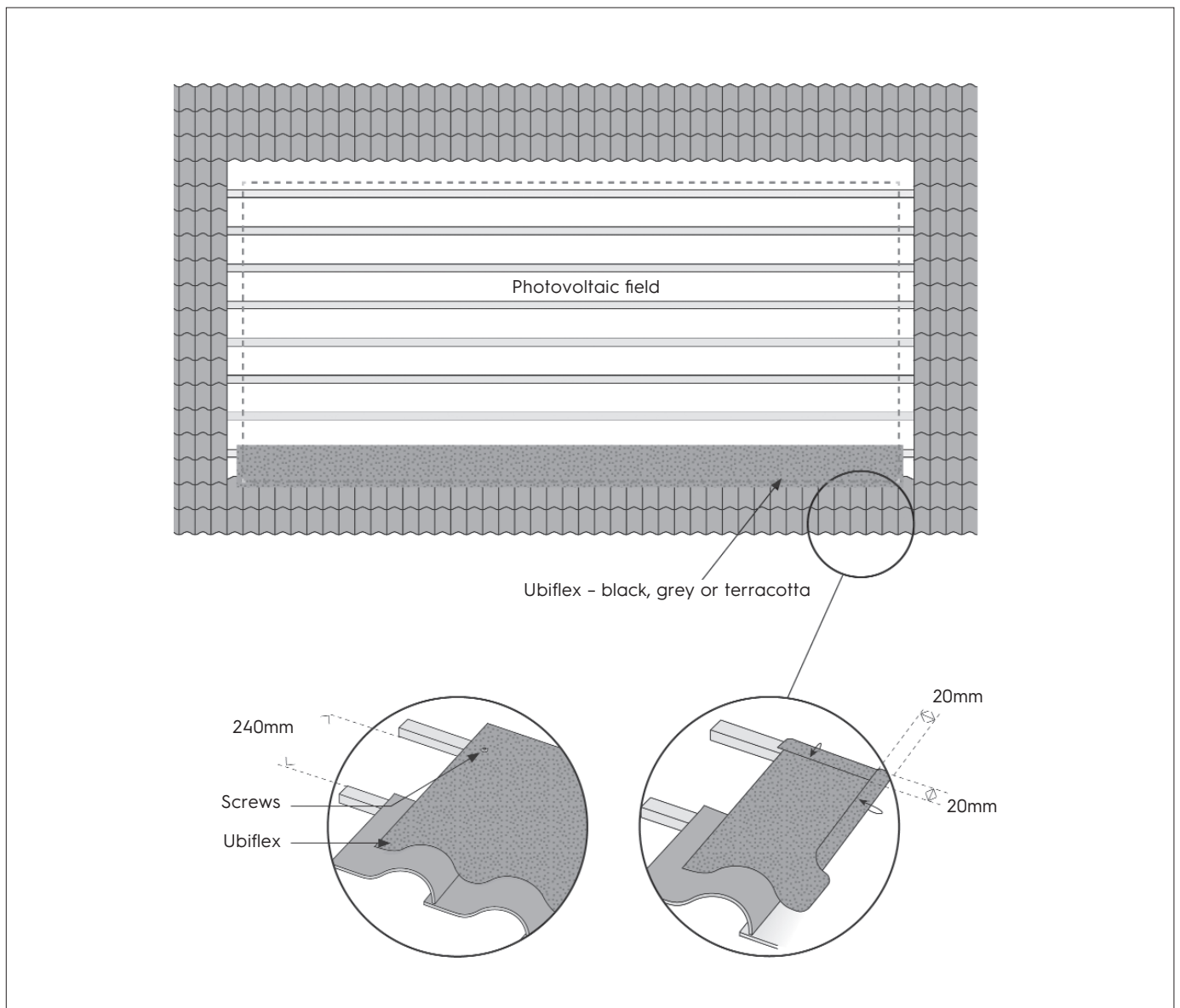
Installation tips



Install Ubiflex

1. Use 400mm wide Ubiflex (for very high profile tiles 500mm may be required). This is available in black, or grey.
2. 240mm above the batten holding the row of tiles below the array add an additional batten over the width of the field. The size of the additional batten should be the equivalent of the original batten specification. A further additional batten is advisable immediately below the other additional batten if the pitch is below 20°.
3. With a 50mm overhang above, roll out and screw the top of the Ubiflex to the newly installed batten at 450mm centres.
4. Fold back the 50mm overhang of Ubiflex.
5. Fold back both right and left hand sides in the same manner.
6. Carefully dress the Ubiflex over the first row of tiles and stick down with Ubbink High Tack along the leading edge. Avoid creating areas where water might pond.
7. Alternatively the Ubiflex can run 450mm beyond each side of the photovoltaic fields to form a traditional soaker detail.

The images below are representative and may change accordingly.





ENERGY



VENTILATION



BUILDING

Nederland • 📞 +31 313 480-300 • @productadvieslijn@ubbink.nl

France • 📞 +33 (0)2 51 13 46 46 • @ubbink@ubbink.fr

Belgium • 📞 +32 9 237 11 00 • @info.bouw@ubbink.be

United Kingdom • 📞 +44 1604 433-000 • @info@ubbink.co.uk

Deutschland • 📞 +49 2301 91011-0 • @info@ubbink.de

Italia • 📞 +39 045 602 0433 • @info@ubbink.it



Ubbink International

@info@ubbink.com • 🌐 www.ubbink.com

Copyright © 2024 Ubbink | Content is subject to change without notice; no liability for errors and misprints.
Availability and configurations may differ per country | UB-2024-01-V01

12.2023