

Ubbink Universal Dry Verge System

Introduction

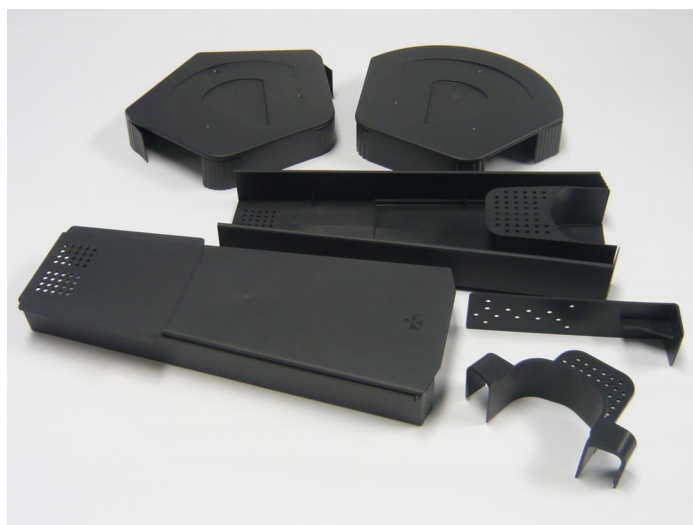
The Ubbink Universal Dry Verge is a mortar free system to mechanically fix the verge tiles according to BS5534 and meets all NHBC regulations giving a 10 year warranty. It is quick and easy to install.

The system offers integral solutions for a secure fixing to the roof. The starter unit at the eaves offers three different installation strategies, depending on the roof construction available:

- Fixing to the barge board
- Fixing to the fascia board
- Fixing to the lowest batten

Key Features and Benefits

- Universal ambi unit, resulting in less stock holding
- Each ambi unit has a water drip channel, preventing water staining
- Suits popular profile roof tiles with a batten gauge range of 255mm to 355mm
- Suits the thin leading edge tile (additional cutting is required on ambi unit tabs)
- The starter unit gives a positive fixing point for the system and can be installed either with or without the gutter in place
- The batten bracket gives a secure fixing to the end of the batten. Also no measuring is required for the 30mm overhang of the batten as the batten bracket abuts a flush cut batten
- Suits roof pitches up to 55°



Dry Verge System Components

- Ambi verge units
- Half round/segmental or universal angled ridge end cap
- Starter unit (incorporates closure)
- Batten bracket

Colours

- Grey , Brown and Terracotta

Material

Ambi verge units

Material: PP talc, UV
Colour: resistant Grey
Surface finish: and brown Matt

Ridge end caps

Material: PP talc, UV
Colour: resistant Grey
Surface finish: and brown Matt

Brackets

Material: PP talc
Colour: Grey
Surface finish: Smooth

Starter units

Material: PP talc
Colour: Grey
Surface finish: Smooth

Weights and Packaging

Ambi verge units

Packaging: Bags of 10, box
Single Unit of 50 0.215 KG
weight:

Ridge end caps

Packaging: Box of 10
Single Unit 0.17 KG
weight:

Brackets

Packaging: Bags of 10, box
Single Unit of 50 0.03 KG
weight:

Starter units

Packaging: Bags of 2, box
Single Unit of 20 0.045 KG
weight: