

UB11 SLATE ROOF VENT

FIXING INSTRUCTIONS

Pitch limitations – 25° and over.

500 x 250 Slates (see over for 600 x 300 slates)
Other slate sizes – modify fixing instructions to suit.

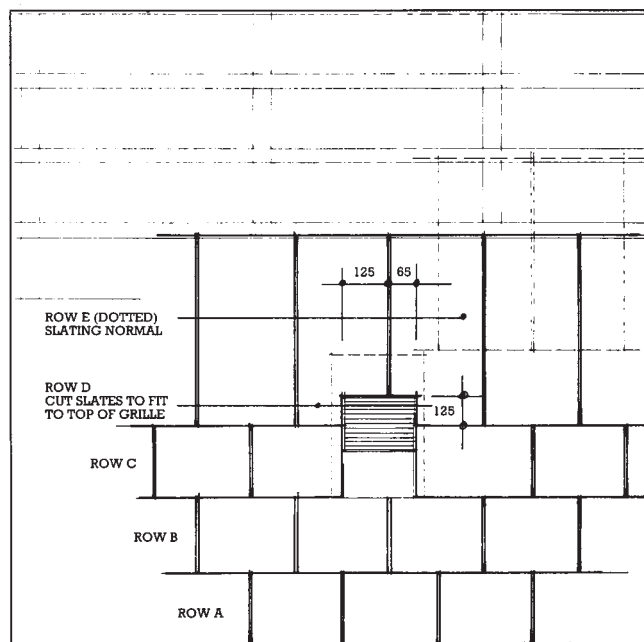
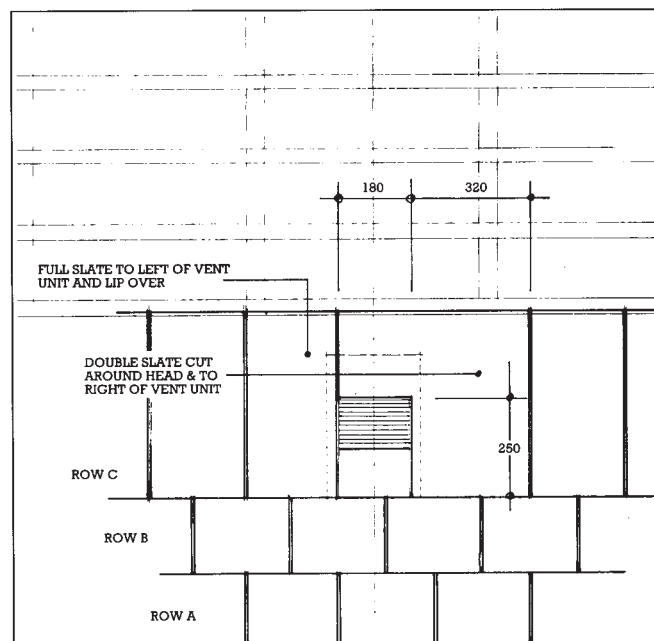
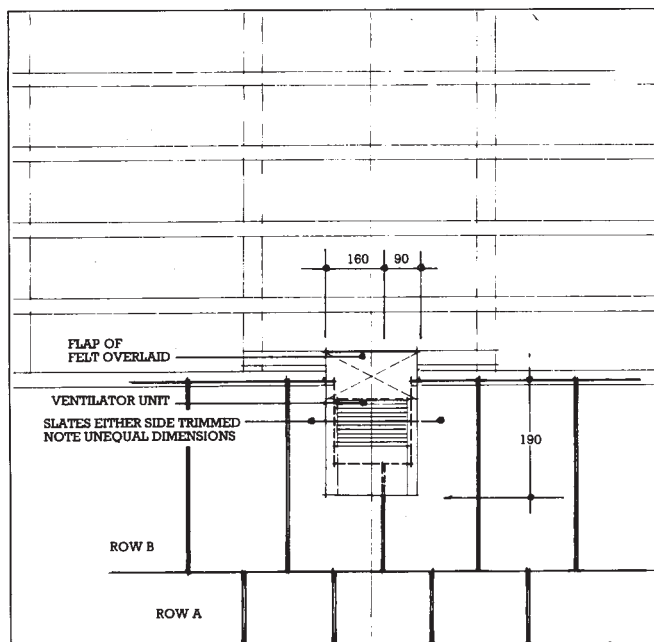
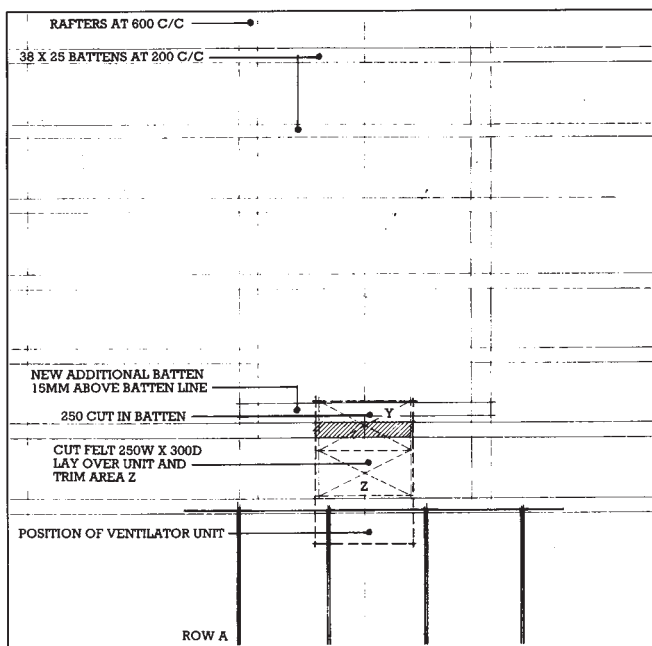
The installation affects the cutting of slates to 3 courses for 500 x 250 slates.

If the UB 11 is sited at base of roof then at least one full depth course of slates is needed to allow free air flow. Free air flow is also essential in a warm roof situation - consult with Ubbink.

When deciding on the position of the UB 11, note arrangement of slates to minimise cutting (see sketches and dimensions).

If the UB 11 is used at head of slope, then at least one full course of slates must be fitted over the unit head.

- Cut 250mm slot into upper support batten, and fit additional batten above cut batten, with a 15mm gap between the two.
- Cut a flap of felt/sarking downwards from the top of new short batten for 300mm x 250mm and dress felt over batten. Trim to top edge of grille on UB 11.
- ROW A – Full course uncut and seat UB 11 into position pushing unit onto top batten so that the batten slots into the cut-out provided on the underside.
- ROW B – Cut 2 slates to measurements as shown and set under unit butting to box on the underside.
- ROW C – Full slate to left of grille of UB 11. Cut double slate to measurements shown to right of grille of UB 11 (double slate important for strength).
- ROW D – Cut 2 slates to measurements shown around side and top of grille to UB 11.
- ROW E – Normal uncut row of slates.



ubbink

Borough Road, Brackley,
Northants, NN13 7TB England

Telephone: 0845 4563499

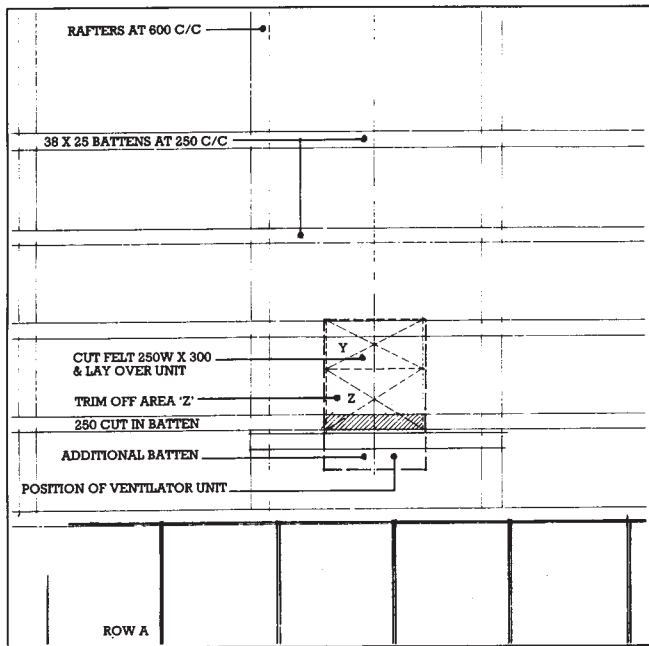
Fax: 01280 705332

email: info@ubbink.co.uk

web: www.ubbink.co.uk

600 x 300 Slates (see over for 500 x 250 slates)

Pitch limitations – 25° and over.



The installation affects the cutting of slates to 2 courses for 600 x 300 slates.

If the UB 11 is sited at base of roof then at least one full depth course of slates is needed to allow free air flow. Free air flow is also essential in a warm roof situation - consult with Ubbink.

When deciding on the position of the UB11, note arrangement of slates to minimise cutting (see sketches and dimensions).

If the UB 11 is used at head of slope, then at least one full course of slates must be fitted over the unit head.

- Cut 250mm slot into lower support batten, and fit additional batten below cut batten, with a 15mm gap between the two.
- Cut a flap of felt/sarking downwards from the top of the upper batten for 300mm x 250mm and dress over batten. Trim to top edge of grille on UB 11.
- Seat unit into position pushing unit onto top batten so that the batten slots into the cut-out provided on the underside.
- ROW B – Course of full slates laid under bottom lip of grille (note felt overlap).
- ROW C – Cut 2 slates (to sizes shown) to go under unit butting to box on the underside.
- ROW D – Full slate to left of grille and cut full slate to measurements shown on right hand side.
- ROW E – Normal uncut row of slates.

