

Datasheet

UBITHERM: onderdakse aansluitstukken (dubbelwandig)
UBTIHERM: raccords sous toiture (double paroi)



TECHNISCHE GEGEVENS

- Toepassing haarden, kachels op hout of kolen, stookolieketels
- Brandstof vaste brandstof: stookolie, hout, kolen,... kolen met verbrandingswaarden 34mj/kg
- Materiaal binnenbuis: RVS 316L - 0.4mm
buitenbuis: RVS 304 - 0.4mm
isolatie: Insulfrax S Blanket 85kg/m³ - 25mm
steun stoelconstructie: RVS 304 - 1mm
(kontra) aansluitstuk & dop: RVS 316L - 0.5mm
- Afmetingen zie volgende pagina
- Diameter diameter uitw. = diameter inw. + 50mm
- Temperatuur 450 à 550°C
- Certificaten EN 1856-1 (CE 0063-CPD-6883)
- Kleur naturel - alle RAL kleuren
- Dakhelling plat of hellende daken
- Extra reinigen met nylon borstel
voor correcte montage: zie montagevoorschrift
T-stuk & stoelconstructie inclusief dop

ARTIKELNUMMER

- zie volgende pagina

WATER- & LUCHTDICHT BOUWEN

- De dakdoorvoer aansluitingen vormen een luchtdichte afsluiting voor dak- en muurdoorvoeren.



DONNEES TECHNIQUES

- Application feu ouvert, poêle au charbon, mazout
- Combustible combustibles solides: mazout, bois, charbon,...
- Matière conduit intérieur: RVS 316L - 0.4mm
conduit extérieur: RVS 304 - 0.4mm
isolation: Insulfrax S Blanket 85kg/m³ - 25mm
support du support mural: RVS 304 - 1mm
raccord & bouchon: RVS 316L - 0.5mm
- Dimensions voir prochaine page
- Diamètre diamètre ext. = diamètre int. + 50mm
- Température 450 à 550°C
- Certificats EN 1856-1 (CE 0063-CPD-6883)
- Couleur naturelle - couleur RAL
- Pente toit plat / en pente
- Extra nettoyage avec brosse nylon
pour montage correct voir notice d'installation
Pièce Té & support avec bouchon

NUMERO D'ARTICLE

- voir prochaine page

ÉTANCHEITÉ À L'AIR & À L'EAU

- Le manchon étanche permettant de garantir une étanchéité à l'air, autour d'un passage de toiture et d'un passage mural.

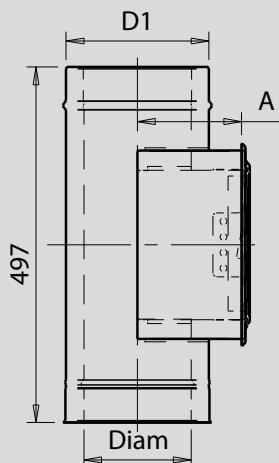
Datasheet

UBITHERM: onderdakse aansluitstukken (dubbelwandig)
UBTIHERM: raccords sous toiture (double paroi)

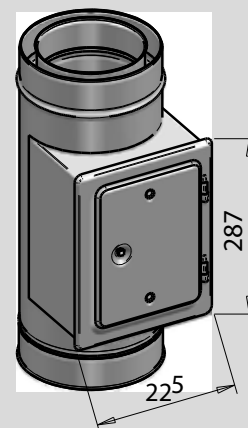


Inspectiesectie Section d'inspection

Diam.	Artikelnr.
125mm	0703195
150mm	0703196
175mm	0703197
200mm	0703198
250mm	0703199

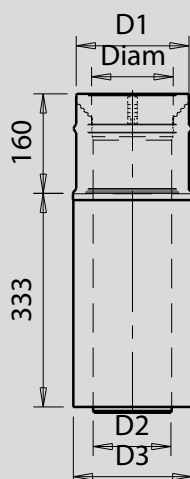


Diam.	D1	A
125	175	143
150	200	155
175	225	168
200	250	180
250	300	205

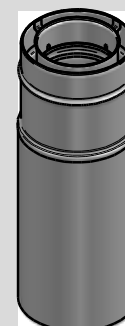


Dubbelwandige paspijp Conduit réglable

Diam.	Artikelnr.
125mm	0754167
150mm	0757157
175mm	0757432
200mm	0758015
250mm	0758565
300mm	0701925
350mm	0701998
400mm	0701667
450mm	0701999

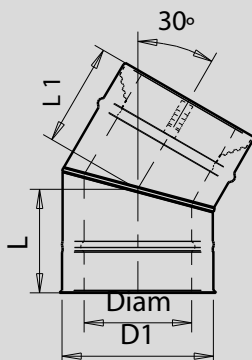


Diam.	D1	D2	D3
125	175	123	182
150	200	148	207
175	225	173	232
200	250	198	257
250	300	248	307
300	350	298	357
350	400	348	407
400	450	398	457
450	500	448	507

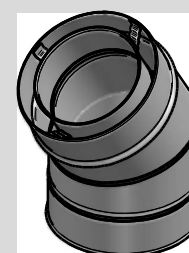


Bocht 30° Coude 30°

Diam.	Artikelnr.
125mm	0760591
150mm	0760924
175mm	0760931
200mm	0761349
250mm	0761356
300mm	0701982
350mm	0701607
400mm	0700646
450mm	0701983



Diam.	D1	L	L1
125	175	121	121
150	200	121	121
175	225	121	121
200	250	121	121
250	300	121	121
300	350	146	146
350	400	146	146
400	450	146	146
450	500	146	146



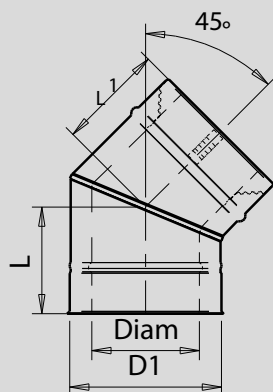
Datasheet

UBITHERM: onderdakse aansluitstukken (dubbelwandig)
UBTIHERM: raccords sous toiture (double paroi)

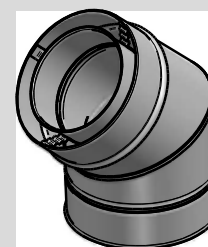


Bocht 45° Coude 45°

Diam.	Artikelnr.
125mm	0754198
150mm	0757188
175mm	0757463
200mm	0758046
250mm	0758644
300mm	0700591
350mm	0700747
400mm	0700771
450mm	0701657

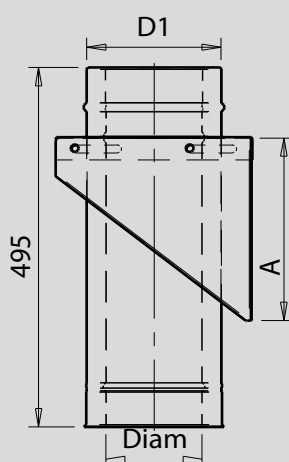


Diam.	D1	L	L1
125	175	146	146
150	200	146	146
175	225	146	146
200	250	146	146
250	300	146	146
300	350	162	162
350	400	162	162
400	450	162	162
450	500	196	196

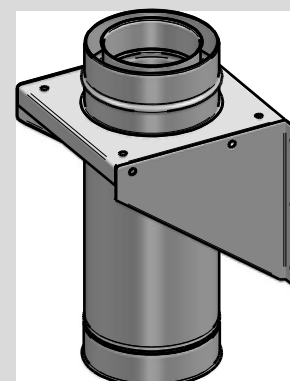


Stoelconstructie Support

Diam.	Artikelnr.
125mm	0700180
150mm	0700181
175mm	0700182
200mm	0700183
250mm	0700184
300mm	0700057
350mm	0700723
400mm	0700772
450mm	0701662

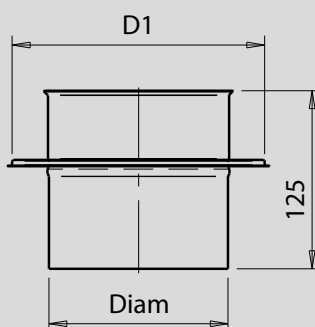


Diam.	D1	A
125	175	250
150	200	300
175	225	350
200	250	400
250	300	500
300	350	600
350	400	700
400	450	800
450	500	900

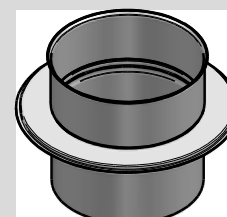


Aansluitstuk Raccord

Diam.	Artikelnr.
125mm	0754332
150mm	0757322
175mm	0757638
200mm	0758228
250mm	0759179
300mm	0700060
350mm	0700715
400mm	0700484
450mm	0701661



Diam.	D1
125	175
150	200
175	225
200	250
250	300
300	350
350	400
400	450
450	500



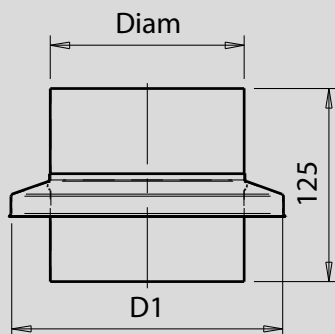
Datasheet

UBITHERM: onderdakse aansluitstukken (dubbelwandig)
UBTIHERM: raccords sous toiture (double paroi)

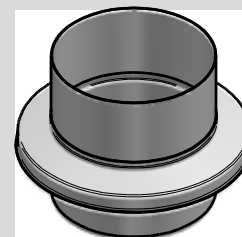


Contra-aansluitstuk Raccord double-simple

Diam.	Artikelnr.
125mm	0759227
150mm	0757353
175mm	0757645
200mm	0758338
250mm	0759186
300mm	0701985
350mm	0700027
400mm	0701986
450mm	0701987

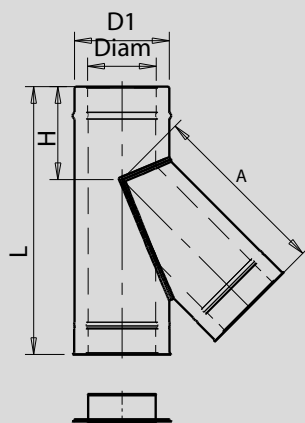


Diam.	D1
125	175
150	200
175	225
200	250
250	300
300	350
350	400
400	450
450	500

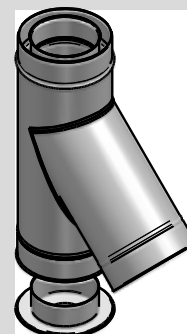


T-stuk 45°+deksel Té 45° + couvercle

Diam.	Artikelnr.
125mm	0700509
150mm	0700548
175mm	0700510
200mm	0700233
250mm	0700167

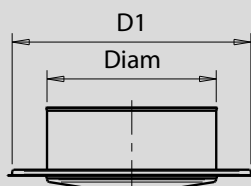


Diam.	D1	L	H	A
125	175	500	175	335
150	200	500	160	350
175	225	500	150	365
200	250	600	190	425
250	300	600	160	445

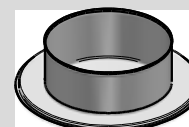


Deksel t.b.v. T-stuk Couvercle pour Té

Diam.	Artikelnr.
125mm	0759234
150mm	0757360
175mm	0757652
200mm	0758383
250mm	0759193
300mm	0703006
350mm	0703171
400mm	0703172
450mm	0703169



Diam.	D1
125	175
150	200
175	225
200	250
250	300
300	350
350	400
400	450
450	500



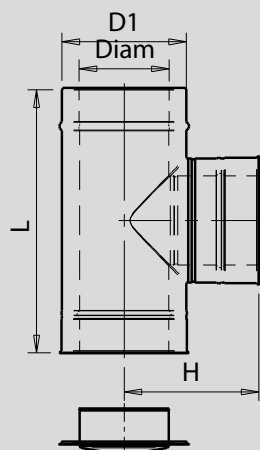
Datasheet

UBITHERM: onderdakse aansluitstukken (dubbelwandig)
UBTIHERM: raccords sous toiture (double paroi)



T-stuk 90°+deksel Té 90° + Couvercle

Diam.	Artikelnr.
125mm	0754181
150mm	0757171
175mm	0757456
200mm	0758039
250mm	0758637
300mm	0700028
350mm	0700764
400mm	0700566
450mm	0701984

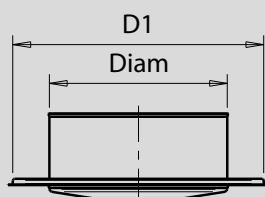


Diam.	D1	L	H
125	175	500	250
150	200	500	250
175	225	500	250
200	250	500	250
250	300	500	250
300	350	600	300
350	400	650	325
400	450	650	325
450	500	700	350

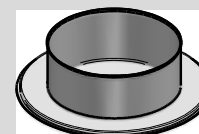


Deksel t.b.v. T-stuk Couvercle pour Té

Diam.	Artikelnr.
125mm	0759234
150mm	0757360
175mm	0757652
200mm	0758383
250mm	0759193
300mm	0703006
350mm	0703171
400mm	0703172
450mm	0703169

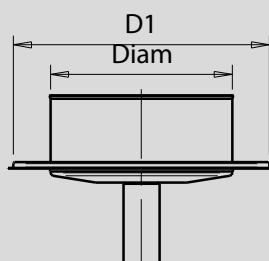


Diam.	D1
125	175
150	200
175	225
200	250
250	300
300	350
350	400
400	450
450	500



Deksel+kondensafvoer t.b.v. T-stuk Couvercle + évacuation de condensat pour Té

Diam.	Artikelnr.
125mm	0701304
150mm	0701305
175mm	0701306
200mm	0701307
250mm	0701308
300mm	0701384
350mm	0702000
400mm	0701385
450mm	0703174



Diam.	D1
125	175
150	200
175	225
200	250
250	300
300	350
350	400
400	450
450	500

