

# Aerfoam Duct 160x2000mm

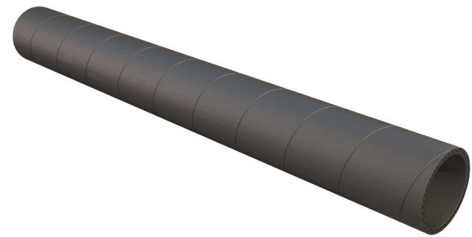
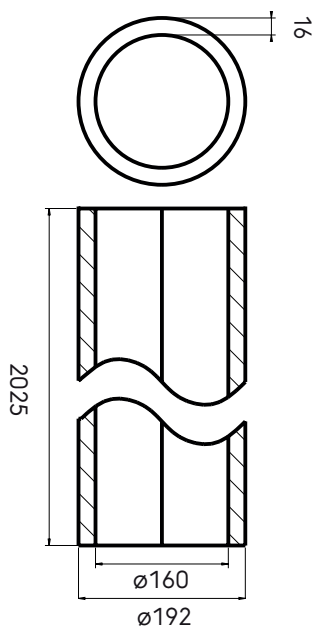
Article number: 188210

## Product introduction

The Aerfoam 160 mm Duct is made of expanded polyethylene (EPE), which minimises the risk of condensation and energy loss. It is very light and extremely easy and safe to install. All Aerfoam parts connect to each other using strong, airtight mechanical connections. They can also be securely mounted to walls or ceilings using brackets. Aerfoam is ideal for both central mechanical ventilation and domestic hot water heat pump systems.

- Insulated to minimise the risk of condensation and energy loss.
- Easy mechanical connection and mounting.
- Lightweight and easy to cut, ensuring quick installation.
- Impact resistant.

## Product dimensions



# Aerfoam Duct 160x2000mm

Article number: 188210

## Technical specifications

Specifications	
Technical	
Colour	Grey
Insulated	<input checked="" type="checkbox"/>
Diameter inner	160 mm
Diameter outer	192 mm
Insulation thickness	16 mm
Performance	
Insulation performance	0.041 W/m.K
Temperature resistance (min.)	-30 °C
Temperature resistance (max.)	60 °C
Installation temperature (min.)	0 °C
Installation temperature (max.)	50 °C
Zeta supply 1 connection	0.17
Zeta extract 1 connection	0.17
Dimensions	
Length gross	2000 mm
Width	192 mm
Height	192 mm
Net weight	0.5 kg

# Aerfoam Duct 160x2000mm

Article number: 188210

## Technical details

Aerfoam Duct		
Diameter	160	
Qv [m³/h]	v [m/s]	Δp [Pa]
100	1,4	1,0
200	2,8	1,0
300	4,1	1,8
400	5,5	3,1
500	6,9	4,9
600	8,3	7,0