

# VENTUS

## Insulated roof terminals for heat recovery ventilation systems

### Introduction

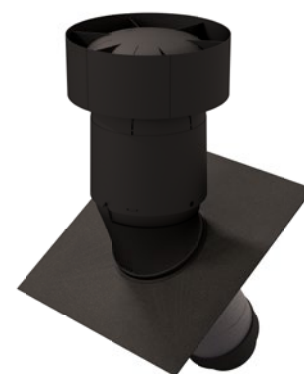
The Ventus is a new generation of clever insulated roof terminals developed for heat recovery ventilation systems for residential and small commercial buildings. It comes in one colour and in four installation kits for either a range of pitched or flat roof applications. Excellent performance on pressure loss comes standard and contributes to a higher ventilation efficiency and lower energy consumption thus saving costs for the homeowner. The Ventus is a smart and sustainable choice for heat recovery ventilation systems and a range of other ventilation applications.

### Features

- Wide range of pitched roof applications (15–55°) with integrated tile base
- Quick and easy installation due to clever perpendicular roof penetration
- Designed to fit to Aerfoam 160 mm & 200 mm (adaptors to fit to 150 mm and 180 mm)
- High performance, optimised pressure loss
- Smart design prevents snow and rain ingress by higher outlet and smart drains

### Technical details

Product specification	Insulated roof terminal for mechanical ventilation with heat recovery (MVHR) in residential and small commercial buildings
Diameter	200 mm with adaptor to 180 mm 160 mm with adaptor to 150 mm
Roof angle	15°–55°
Type of connection	Socket-Spigot
Available colours	Black
Weather resistance	All conditions (including UV)
<b>Materials</b>	
Terminal	PP
Insulation	EPS
Insulated ductwork	EPE (Aerfoam)
Pitched roof tile	PP, PA and Ubiflex lead-free flashing
Flat roof tile	Aluminium
<b>Adaptors</b>	
200 mm	200/180 mm
160 mm	160/150 mm
<b>Accessories</b>	
Mounting bracket	
Airtight seals	



Pitched roof solution with  
perpendicular roof penetration



Flat roof solution



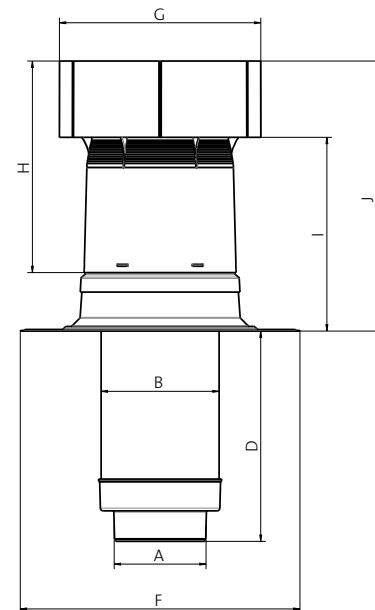
# VENTUS

Insulated roof terminals  
for heat recovery ventilation systems

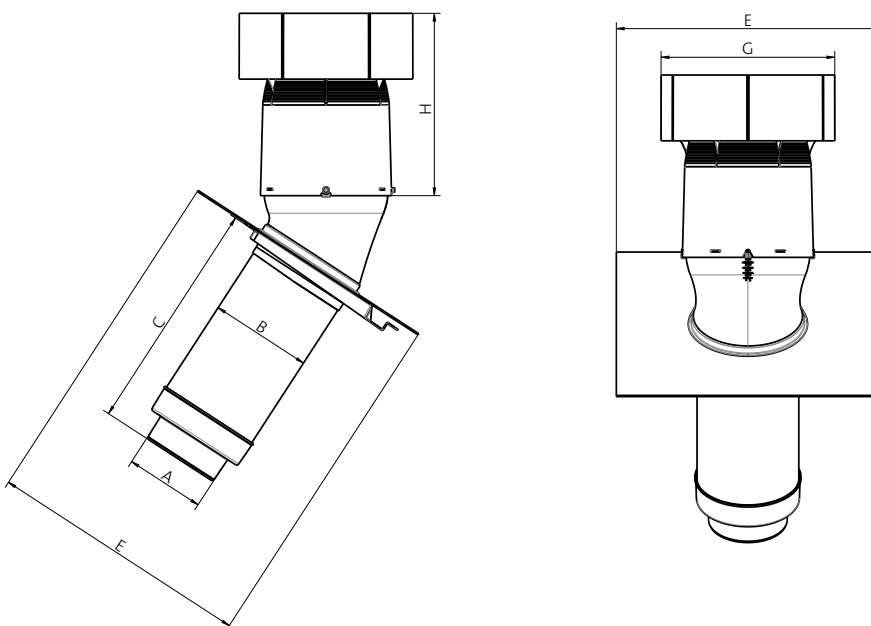
## Technical details

Dimensions	160 (150)	200 (180)
A [mm]	150	180
B [mm]	192	232
C [mm]	518	531
D [mm]	425	413
E [mm]	600	600
F [mm]	550	550
G [mm]	396	396
H [mm]	416	416
I [mm]	381	381
J [mm]	531	531

Ventus flat roof solution



Ventus pitched roof solution



# VENTUS

Insulated roof terminals  
for heat recovery ventilation systems



Air supply		160 (150)				
	diameter		angle			
	150	160	<3°	15°	35°	55°
			Zeta [-]			
			1,51	1,68	1,74	1,92
Qv (Volume) [m³/h]	v (Velocity) [m/s]		Δp (Pressure loss) [Pa]			
50	0,79	0,69	0,4	0,5	0,5	0,5
100	1,57	1,38	1,7	1,9	2,0	2,2
150	2,36	2,07	3,9	4,3	4,5	4,9
200	3,14	2,76	6,9	7,7	8,0	8,8
250	3,93	3,45	10,8	12,0	12,5	13,7
300	4,72	4,14	15,6	17,3	18,0	19,8
350	5,50	4,84	21,2	23,5	24,5	26,9
400		5,53	27,7	30,8	31,9	35,2
450						
500						
550						
600						

Air supply		200 (180)				
	diameter		angle			
	180	200	<3°	15°	35°	55°
			Zeta [-]			
			2,44	2,61	2,69	2,79
Qv (Volume) [m³/h]	v (Velocity) [m/s]		Δp (Pressure loss) [Pa]			
50	0,55	0,44	0,3	0,3	0,3	0,3
100	1,09	0,88	1,1	1,2	1,3	1,3
150	1,64	1,33	2,6	2,8	2,8	2,9
200	2,18	1,77	4,6	4,9	5,1	5,2
250	2,73	2,21	7,2	7,7	7,9	8,2
300	3,27	2,65	10,3	11,0	11,4	11,8
350	3,82	3,09	14,0	15,0	15,5	16,1
400	4,37	3,54	18,3	19,6	20,2	21,0
450	4,91	3,98	23,2	24,8	25,6	26,5
500	5,46	4,42	28,6	30,7	31,6	32,8
550		4,86	34,6	37,1	38,2	39,6
600		5,31	41,2	44,2	45,5	47,2



# VENTUS

Insulated roof terminals  
for heat recovery ventilation systems



Air extract		160 (150)				
	diameter		angle			
	150	160	<3°	15°	35°	55°
			Zeta [-]			
			0,85	1,11	1,17	1,23
Qv (Volume) [m³/h]	v (Velocity) [m/s]		Δp (Pressure loss) [Pa]			
50	0,79	0,69	0,2	0,3	0,3	0,4
100	1,57	1,38	1,0	1,3	1,3	1,4
150	2,36	2,07	2,2	2,9	3,0	3,2
200	3,14	2,76	3,9	5,1	5,4	5,7
250	3,93	3,45	6,1	7,9	8,4	8,9
300	4,72	4,14	8,8	11,4	12,1	12,7
350	5,50	4,84	11,9	15,5	16,5	17,3
400		5,53	15,6	20,3	21,5	22,7
450						
500						
550						
600						

Air extract		200 (180)				
	diameter		angle			
	180	200	<3°	15°	35°	55°
			Zeta [-]			
			1,61	1,75	1,83	1,96
Qv (Volume) [m³/h]	v (Velocity) [m/s]		Δp (Pressure loss) [Pa]			
50	0,55	0,44	0,2	0,2	0,2	0,2
100	1,09	0,88	0,8	0,8	0,9	0,9
150	1,64	1,33	1,7	1,9	1,9	2,1
200	2,18	1,77	3,0	3,3	3,4	3,7
250	2,73	2,21	4,7	5,1	5,4	5,8
300	3,27	2,65	6,8	7,4	7,8	8,3
350	3,82	3,09	9,3	10,1	10,6	11,3
400	4,37	3,54	12,1	13,2	13,8	14,7
450	4,91	3,98	15,3	16,7	17,4	18,6
500	5,46	4,42	18,9	20,6	21,5	23,0
550		4,86	22,9	24,9	26,1	27,8
600		5,31	27,3	29,6	31,0	33,1

