

UBIFLEX EXTREME

waterproof flashing



Build smart.

Product information

Ubiflex Extreme is a high quality waterproof flashing material which has been developed for quick and easy installation and to withstand harsh weather conditions keeping its superb product benefits and installation features. Ubiflex Extreme can be used for most flashing applications where lead is traditionally used.

Ubiflex is made of silicone and reinforced with an aluminium mesh.

Available roll dimensions

width	280, 370, 560, 930 mm	-0/+2 mm
length	5.0m	-0/+100 mm
thickness	2.5 mm	+/-0.2 mm

Other dimensions on request.

Max. processing length

total roll length

Weight

3.6 kg/m ²	+/- 10%
280 mm x 5.0m	5.0kg
370 mm x 5.0m	6.8kg
560 mm x 5.0m	10.0kg
930 mm x 5.0m	16.8kg

Operating temperature

(cutting, plying, bossing) -30°C - 180°C

Temperature stability

(in use) -30°C - 180°C

Recommended tools

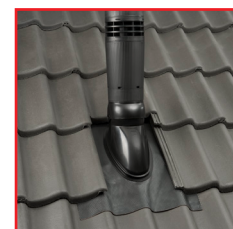
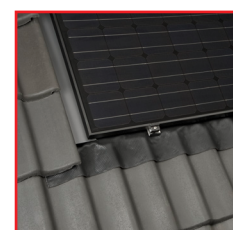
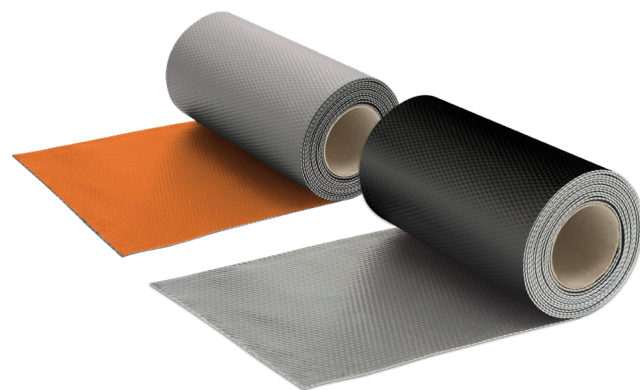
Use undamaged bossing tools, no metal or rubber hammers.

Recommended fixing methods

Brickwork: Chased into brickwork and use Ubiflex clips.

On tiles: Extreme Fix to be used behind the leading edge and on all overlaps.

Other: Nailed or screwed against subconstruction (on sheltered spots).



UBIFLEX EXTREME

waterproof flashing



Build smart.

Wind uplift resistance

Ubiflex Extreme was tested at the BRE with Extreme Fix and withstood wind speeds of 160 km/h.

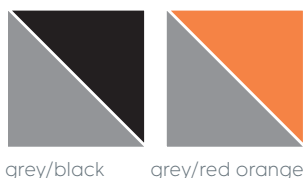
Compatibility

Ubiflex Extreme does not react to aluminum, copper and zinc and has superior resistance compared to other flashing materials. However, if Ubiflex Extreme is likely to come in contact with aggressive chemicals during work or maintenance, first test on a piece of material before proceeding. If in doubt contact your reseller.

Colours

The colours are close to RAL 9005, RAL 7012 and RAL 2001.

The colours are reversible. Both colours can be used as the exposed surface.



grey/black

grey/red orange

Packaging

Ubiflex Extreme rolls are delivered in transparent foil.

Non-toxic

Not hazardous to human and environment.

Watertightness

watertight (according to AS/NZS 4347.1)

Pliability

pass (according to AS/NZS 4347.4)

Resistance to embossing at -20°C

No holes, blisters and cracks after embossing on a profile tile.

Bending characteristics

	23°C	-50°C
longitudinal	pass	pass
transverse	pass	pass
EN 495-5		

Tensile strength

longitudinal	487 N
transverse	1212 N
EN 12311-1	

Elongation

longitudinal	84%
transverse	12%
EN 12311-1	

UV resistance

excellent	EN-ISO 4892-2
-----------	---------------

Resistance to thermoshock

not sensitive	EN 12088:2013
---------------	---------------

Sensitivity to thermal aging and moisture

not sensitive	EN 12088:2013
---------------	---------------

Deformation under static load (10m masonry wall)

pass	EN 1605:2013/EN 12730:2001
------	----------------------------

Fire Rating

Class A (BRE)	BS 476-3:2004
---------------	---------------

