

# AERFOAM

## Insulated ductwork system | T-pieces/Y-pieces



ubbink

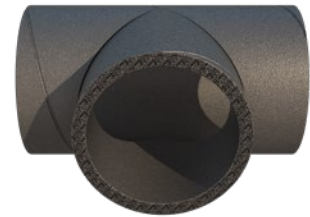
Build smart.

### Features & benefits

- Well-insulated
- Low pressure drop due to smooth inner surface
- Non-porous
- Airtight
- Doesn't rust
- Compact, mechanical connections (i.e. no tape or sealants required)
- Extremely light material
- Easy and safe to cut
- Pliable
- Impact resistant (i.e. no dents)
- Easy to dismantle for maintenance
- BIM-ready

### Specifications

Function	Transport of air for ventilation and/or heating and/or cooling
Material T & Y pieces	EPE
Material connectors and wall brackets	PP
Material wall bracket 200	Aluminium
Density	30kg/m <sup>3</sup>
Heat transfer coefficient	0.041W/m.K (EN 12667)
Thermal resistance	R = 0.39m <sup>2</sup> K/W
Temperature range	Min. -30°C   Max. +60°C
Wall thickness	16mm
Reaction to fire T & Y pieces	Class B - s2, d0 (EN 13501-1:2018)
Reaction to fire connectors and wall brackets	Class E (EN 13501)
Airtightness	D (EN 12237) = ATC 2 (EN 16798)
Colour	Grey



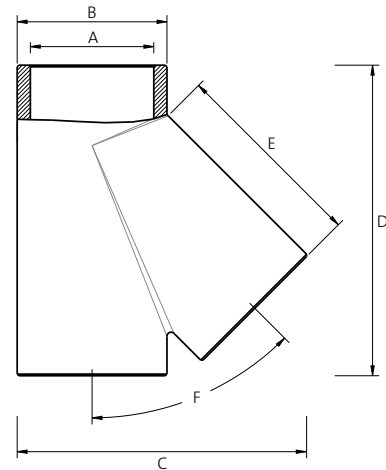
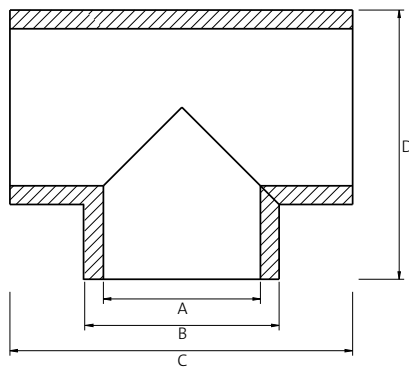
T-piece



Y-piece



### Technical details



T-piece					
	125	150	160	180	200
A [mm]	125	-	160	-	-
B [mm]	157	-	192	-	-
C [mm]	276	-	316	-	-
D [mm]	216	-	254	-	-

Y-piece					
	125	150	160	180	200
A [mm]	-	150	-	180	-
B [mm]	-	182	-	212	-
C [mm]	-	352	-	410	-
D [mm]	-	377	-	440	-
E [mm]	-	240	-	278	-
F [°]	-	45	-	45	-

