

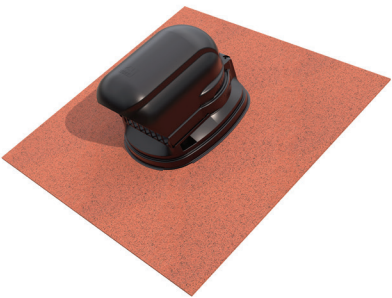
Cable and duct entry 120 15-55° Ubiflex standard Terracotta

Article number: 770231

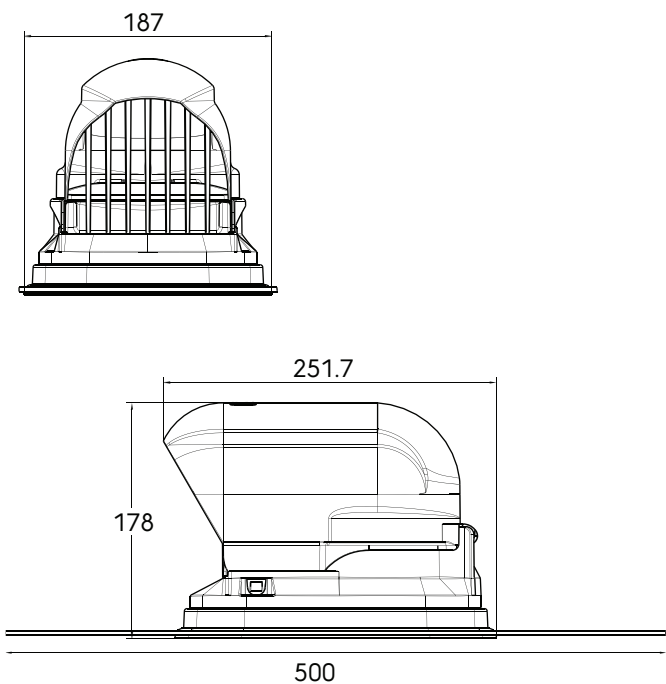
Product introduction

The cable and duct entry is suitable for pitched tiled roofs (15-55°) and enables a safe, watertight installation. The hinged cover allows easy access, while the large internal diameter accommodates two pipes up to Ø50 mm, such as heat pump pipes. An integrated bird and leaf guard offers extra protection, and the universal compatibility ensures reliability.

- Hinged hood for easy installation
- Integrated bird and leaf guard
- Ideal for easy placement of cable bundles
- Universal and brand independent
- For use on pitched roofs



Product dimensions



Technical specifications

Specifications	
General	
Type	Cable Outlets
Technical	
Colour	Black

Cable and duct entry 120 15-55° Ubiflex standard Terracotta



Article number: 770231

Technical specifications (continuation)

Technical	
Material	PP
Bird protection	<input checked="" type="checkbox"/>
Flashing	<input checked="" type="checkbox"/>
Flashing length	500 mm
Flashing material	Ubiflex standard
Insulated	<input type="checkbox"/>
Throughput diameter	120
Installation	
Roof type	Pitch
Roof angle (min.)	15 °
Roof angle (max.)	55 °
Dimensions	
Length gross	500 mm
Width	500 mm
Height	178 mm
Height overroof	178 mm
Logistical	
Gross weight	1.16 kg
Packaging / Trade length	615 mm
Packaging / Trade width	265 mm
Packaging / Trade height	185 mm